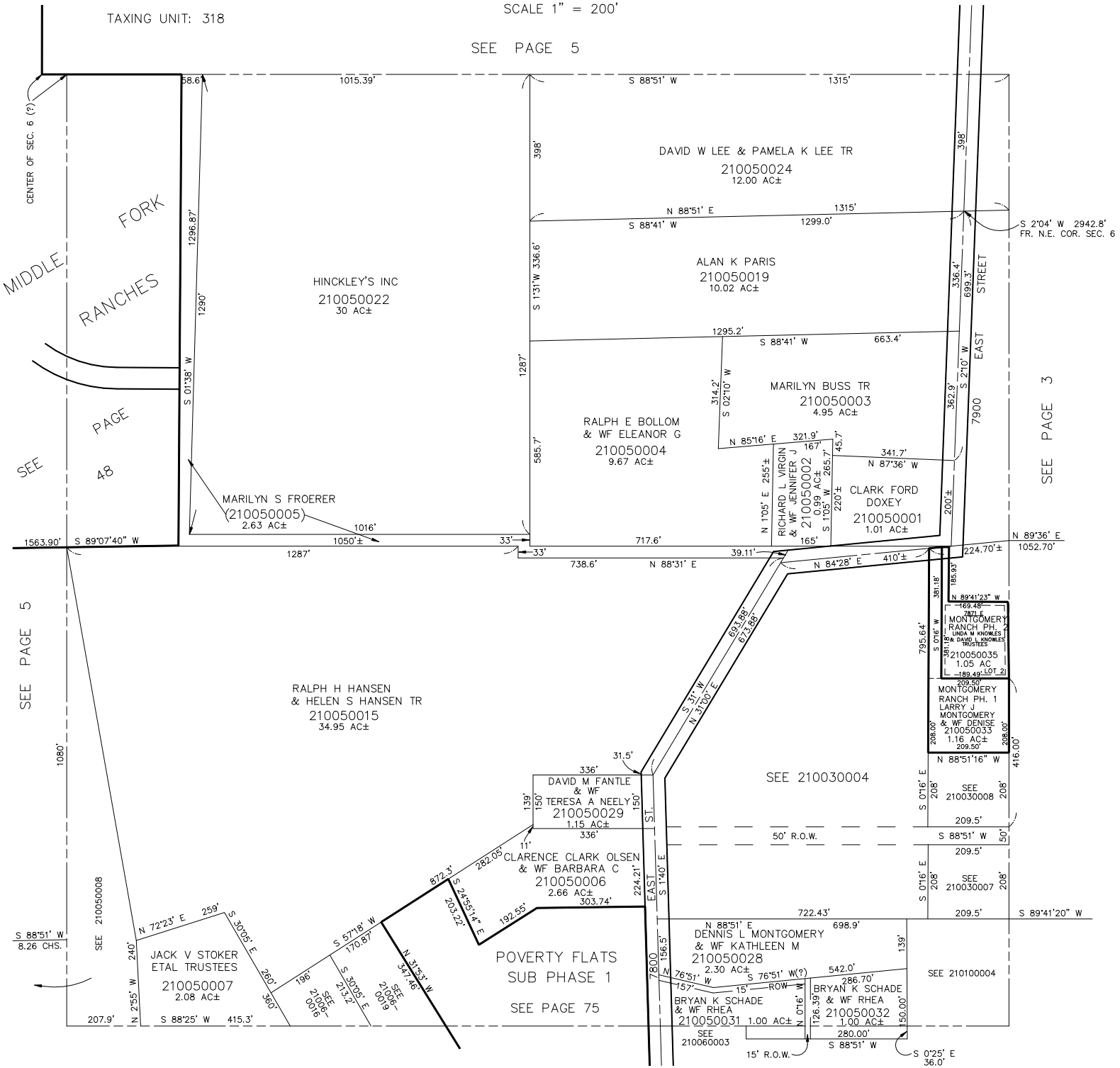


S.E. 1/4
SECTION 6, T.6N., R.2E., S.L.B. & M.

IN WEBER COUNTY
SCALE 1" = 200'

TAXING UNIT: 318

SEE PAGE 5



CENTER OF SEC. 6 (?)

MIDDLE FORK RANCHES

SEE PAGE 48

SEE PAGE 5

SEE 210050008

JACK V STOKER ETAL TRUSTEES
210050007
2.08 AC±

RALPH H HANSEN & HELEN S HANSEN TR
210050015
34.95 AC±

POVERTY FLATS SUB PHASE 1
SEE PAGE 75

SEE PAGE 6

DAVID M FANTLE & WF TERESA A NEELY
210050029
1.15 AC±

CLARENCE CLARK OLSEN & WF BARBARA C
210050006
2.66 AC±
303.74'

DAVID W LEE & PAMELA K LEE TR
210050024
12.00 AC±

ALAN K PARIS
210050019
10.02 AC±

RALPH E BOLLUM & WF ELEANOR G
210050004
9.67 AC±

MARILYN BUSS TR
210050003
4.95 AC±

RICHARD L VIRGIN & WF JENNIFER J
210050002
2.00 AC±

CLARK FORD DOXEY
210050001
1.01 AC±

MONTGOMERY RANCH PH. 1
LARRY J MONTGOMERY & WF DENISE
210050033
1.16 AC±
209.50'

MONTGOMERY RANCH PH. 2
LARRY J MONTGOMERY & WF DENISE
210050035
1.05 AC±
209.50'

SEE 210030004

DENNIS L MONTGOMERY & WF KATHLEEN M
210050028
2.30 AC±

BRYAN K SCHADE & WF RHEA
210050031
1.00 AC±

BRYAN K SCHADE & WF RHEA
210050032
1.00 AC±

SEE 210060003

SEE 210100004

SEE PAGE 3